

MONTHLY MEMBERSHIP PROGRESS REPORT

District 2 S5

Results as of: 12/31/2019

GMT:

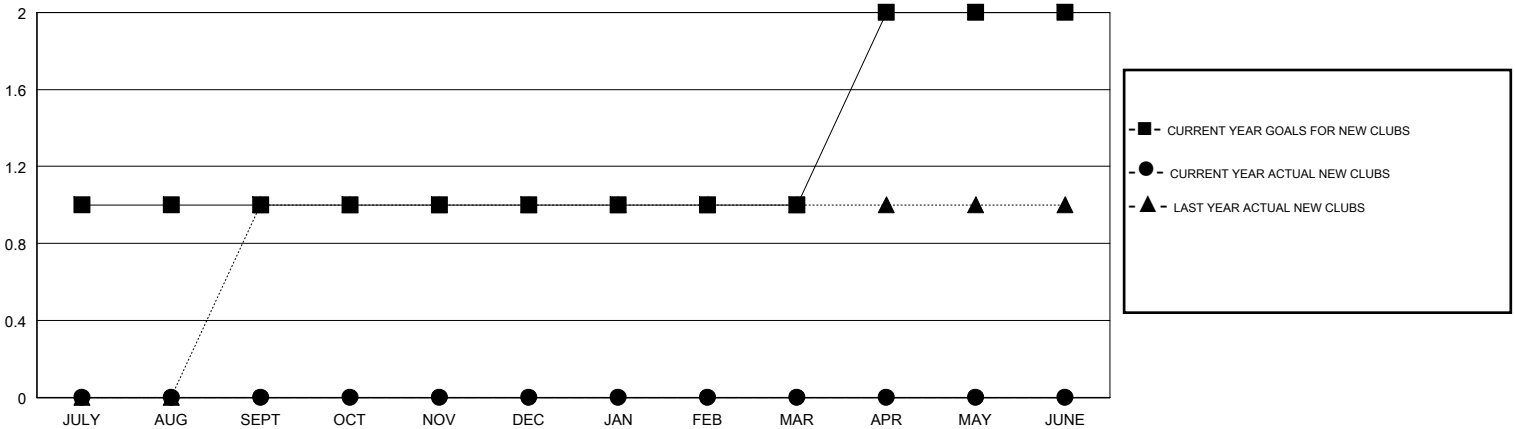
LOCATION TEXAS

GMT CA

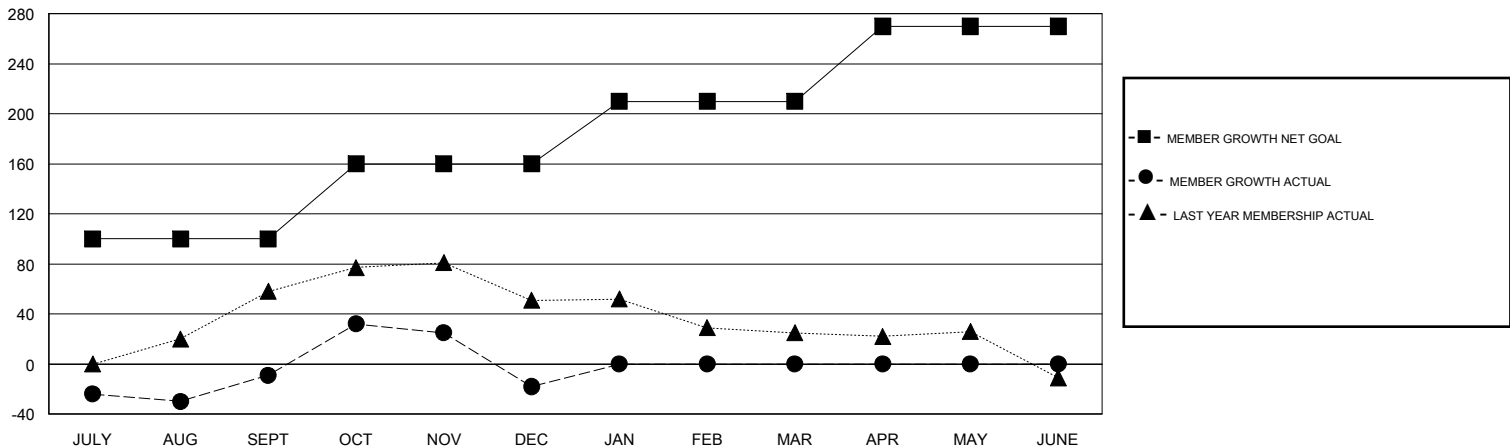
Clubs			
RESULTS FOR 2019-2020			
QUARTER	NEW CLUB GOAL	NEW CLUBS	DROPPED CLUBS
JULY/AUG/SEPT	1	0	0
OCT/NOV/DEC	0	0	0
JAN/FEB/MAR	0	0	0
APR/MAY/JUNE	1	0	0

Members			
RESULTS FOR 2019-2020			
QUARTER	MEMBER GROWTH NET GOAL	MEMBER GROWTH ACTUAL	DROPPED MEMBERS ACTUAL (including transfers)
JULY/AUG/SEPT	100	75	77
OCT/NOV/DEC	60	87	89
JAN/FEB/MAR	50	0	0
APR/MAY/JUNE	60	0	0

GOALS AND ACTUAL NEW CLUBS CUMULATIVE



GOALS AND ACTUAL MEMBERS CUMULATIVE



DROPPED CLUBS: 0	37 CLUBS OF 61 ADDED 1 OR MORE NEW MEMBERS	<u>GENDER DISTRIBUTION</u> MALE 1,499 (61.56%) FEMALE 936 (38.44%)
<u>DROPPED MEMBERS</u> DECEASED 14 CLUB CANCELLED 0 OTHER 152 <hr/> TOTAL 166	CLICK HERE FOR CUMULATIVE MEMBERSHIP DATA	TOTAL FAMILY UNIT MEMBERS 402 FAMILY MEMBERS PAYING HALF DUES 204